

# Non Functional Vents Installation Instructions

## Recommended Tools/Materials

***\*Not included or supplied by Builders Edge***

- Pencil
- Tape measure
- Level
- Exterior-grade
- polyurethane-compatible adhesive

**Additional tools suggested if fastening:**

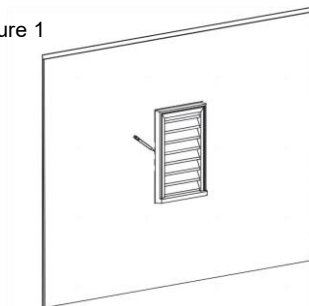
- Sandpaper (220-grit recommended)
- Caulk gun
- Putty knife
- Exterior-grade polyurethane-compatible sealant and / or filler
- Exterior-grade fasteners (trim head screws recommended)
- Hammer or pneumatic nailer
- Nail countersink
- Drill / driver (if using screws)

## Installation Instructions

### 1) Mark installation area

Hold the non functional vents in place and mark the desired location (Figure 1). Pre-drill fastener locations (no more than 400mm apart) if needed.

Figure 1



### 2) Apply adhesive

Apply a 6mm bead of adhesive to the mounting surfaces on the back of the vent, leaving the bottom open for water to escape (Figure 2).

Fasten to wall/exterior and stick down.

Note: Follow the instructions provided by the adhesive manufacturer to ensure that the adhesive has set, adhering to recommended curing times, environmental conditions, and ventilation guidelines.

Figure 2



# Non Functional Vents Installation Instructions

---

Continued

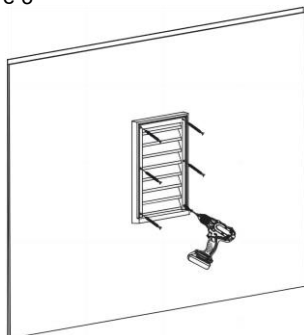
**If a stronger fixing is required, please follow steps 3 and 4.**

**If you are wanting to adhere the gable vent down alone, continue to step 5.**

### **3) Fasten (optional)**

Press the vent into place and fasten with exterior-grade fasteners (Figure 3), making sure to countersink them below the surface. Fasteners should be no more than 400mm apart. Remove any excess adhesive.

Figure 3



### **4) Fill and sand fastener holes (optional)**

Fill fastener holes with filler and sand to match surrounding area, if needed, but be careful not to remove the primer.

### **5) Touch up or finish**

If the vent was finished prior to installation, touch up filled fastener holes with colour-matched finish.

Caulk around top and sides with a sealant, leaving the bottom open for water to escape.

### **6) Paint**

Apply the final finish desired using any good quality acrylic paint or latex paint (exterior grade for exterior applications). Apply paint lengthwise, the direction grain would run as if the non functional vents were wood.